

HISCO HD DVR USER'S MANUAL

HISCO DVR / Protecting Our Way of Life

COPYRIGHT AND IMPORTANT INFORMATION	4
WARNINGS	4
INSTALLATION AND PROACTIVE STEPS	5
Pre-Cautions	5
Location conditions to avoid for installing Hisco DVR System	5
Installation:	5
Installing the DVR	6
IMPORTANT SAFEGUARD	7
IMPORTANT NOTICES	8
1. INTRODUCTION DVR SYSTEM	9
1-1. Digital Video Security System features	9
1-2. PROVIDED COMPONENTS	10
2. SETTING UP HISCO DVR SYSTEM	11
2-1. SYSTEM SETTING	11
2-2. CAMERA SETTING	14
2-3 Record setup	14
2-4. MOTION DETECTION SETTING	16
Motion setup	16
Event Notification	16
Notification Schedule setup	16
Motion area setup	17
2-5 Display setup	18
Display	18
Spot monitor setup	18
2-6 Network setup	20
2-7. USER SETTING	21
3. HD DVR Live View interface	22
Manual Backup	24
CD/DVD Burning	24
4. HD DVR FOOTAGE REVIEW	25
4-1 DVR Search	25

4-2 Player button	26
4-3 Save AVI Function	27
Save as AVI video file	27
Saving JPEG image.....	27
4-4 Smart Search.....	28
4-5 Image Post production.....	29
4-6Book Mark.....	29
4-7Setting.....	30
5. Central Management System (CMS).....	30
5-1 CMS Installation	31
CMS client Uninstall	33
5-2 CMS Main.....	34
5-3 Client Program setting	35
Local user account	35
Register New Site,	36
CMS local Setting	38
5-4 Live view Feature	39
Live view Tool Bar	39
5-5 Remote Search.....	40
5-6 Remote HD DVR server Setup.....	40
5-7 Camera Group.....	41
Group setup	41
Connect to Camera Group	41
6. iPhone/SmartPhone (Smartview)	42

COPYRIGHT AND IMPORTANT INFORMATION

Copyright

The contents of this manual may not be copied or reproduced in any manner or form without the prior written consent of Hisco Technologies Canada, Ltd.

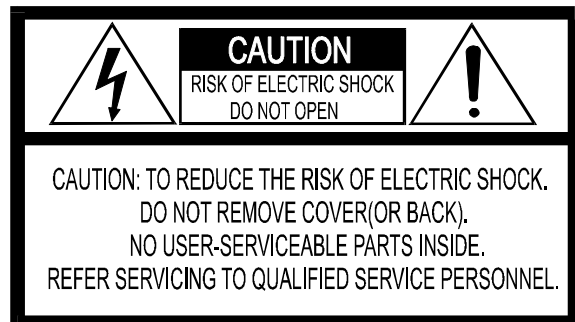
Important Information

Before proceeding, please read and observe all instructions and warnings contained in this manual. Retain this manual with the original bill of sale for future reference and, if necessary, warranty service.

When unpacking your digital recorder, check for missing or damaged items. If any item is missing, or if damage is evident, DO NOT INSTALL OR OPERATE THIS PRODUCT. Contact your dealer for assistance.

WARNINGS

TO REDUCE THE RISK OF FIRE OR ELECTRIC SHOCK, DO NOT EXPOSE THIS PRODUCT TO RAIN OR MOISTURE. DO NOT INSERT ANY METALLIC OBJECT THROUGH VENTILATION GRILLS.



Explanation of Graphical Symbols



The lightning flash with arrowhead symbol, within an equilateral triangle, is intended to alert the user to the presence of un-insulated “dangerous voltage” within the product’s enclosure that may be of sufficient magnitude to constitute a risk of electric shock to persons.



The exclamation point within an equilateral triangle is intended to alert the user to the presence of important operating and maintenance (servicing) instruction in the literature accompanying the product.

INSTALLATION AND PROACTIVE STEPS

Pre-Cautions

- Should any liquid or solid object fall into the cabinet, unplug the unit, and have it checked by the qualified personnel before operating it any further.
- Unplug the unit from the wall outlet if it is not going to be used for several days or more.
- To disconnect the cord, pull it out by the plug. Never pull the cord itself.
- Allow adequate air circulation to prevent internal heat build-up.
- Do not place the unit on surfaces (rugs, blankets, etc.) or near materials (curtains, draperies) that may block the ventilation holes.

Location conditions to avoid for installing Hisco DVR System

- Excessive heat, such as direct sunlight or heating appliances
- Surfaces (rugs, blankets, etc.) or near materials (curtains, draperies) that may block the ventilation holes.
- Moisture, dust, and smoke
- Magnetic fields or electrical waves
- Below freezing temperatures

Installation:

Before installing the system, please ensure that

- The power is switched off
- The unit has adequate air circulation to prevent internal heat build-up
- There is enough room for the unit and its connecting cables
- The unit is placed on an even surface
- The unit is not placed near any electronic equipment (e.g. microwave, radio, or any wireless equipment such as cell phones)
- The unit is not exposed to rain or water. The unit is not designed to be waterproof
- A UPS(Uninterrupted Power Supply) must be used with the Hisco DVR unit to protects DVR from surges, spikes, lightning and other power disturbances

Note: An Uninterrupted Power Supply (UPS) must be used to comply with our warranty

Installing the DVR

Note: Do not plug in power until all the cables have been connected

1. Once a location has decided. Carefully remove the DVR, Keyboard, mouse and BNC connectors from the box and place the DVR on an even surface
2. Plug keyboard and mouse into the appropriate plug at the back of the HD DVR
3. Plug in the monitor cable from the monitor into the video graphic card at the back of the DVR. Don't forget to plug in the power cord for the monitor.
Note: For HD spot monitor, connect HDMI Cable directly into HD capture card.
For Analog monitor spot out, connect RCA Video Cable directly into analog capture card
4. Plug in BNC HD cameras and connect BNC analog cameras to the back of the DVR.
5. Once all the connections are done. Plug in the power cord to the back of the DVR power supply. Turn ON the small switch at the back **(I)**. Now plug the power cord into the outlet. This will start the Hisco HD DVR security software

Cleaning:

- Clean the unit with a slightly damp soft cloth.
- Use a mild household detergent. Never use strong solvents such as thinner or benzene as they might damage the finishing of the unit.

IMPORTANT SAFEGUARD

1. **READ INSTRUCTIONS** – All the safety and operating instructions should be read before the appliance is operated.
2. **RETAIN INSTRUCTIONS** – The safety and operating instructions should be retained for future reference.
3. **CLEANING** – Unplug video monitor or equipment from the wall outlet before cleaning. Do not use liquid cleaners or aerosol cleaners. Use a damp cloth for cleaning.
4. **ATTACHMENTS** – Do not use attachments that are not recommended by the video monitor or equipment manufacturer as they may result in the risk of fire, electric shock or injury to persons.
5. **WATER AND MOISTURE** – Do not operate video monitor or equipment near water – for example, near a bathtub, washbowl, kitchen sink, laundry tub, in a wet basement, or near a swimming pool, or the like.
6. **POWER SOURCES** – Video monitor or equipment should be operated only from the type of power source indicated on the marking label. If you are not sure of the type of power supplied to your home, consult your video monitor or equipment dealer or local power company. For video monitor or equipment designed to operate from battery power refer to the operating instructions.
7. **POWER CORDS** – Do not allow anything to rest on the power cord. Do not locate video monitor or equipment where persons walking on it will abuse the cord.
8. **OBJECT AND LIQUID ENTRY** -- Never push objects of any kind into video monitor or equipment through openings as they may touch dangerous voltage points or short-out parts that could result in a fire or electric shock. Never spill liquid of any kind on the product.
9. **SERVICING** – Do not attempt to service video monitor or equipment yourself as opening or removing covers may expose you to dangerous voltage or other hazards. Refer all servicing to qualified service personnel.
10. **DAMAGE REQUIRING SERVICE** – Unplug video monitor or equipment from the wall outlet and refer servicing to qualified service personnel under the following conditions :
 - A. When the power-supply cord or the plug has been damaged.
 - B. If liquid has spilled, or objects have fallen into the video product.
 - C. If the video product has been exposed to rain or water.
 - D. If the video product does not operate normally by following the operating instructions, adjust only those controls that are covered by the operating instructions as an improper adjustment of other controls may result in damage and will often require extensive work by a qualified technician to restore the video product to its normal operation.
 - E. If the video product has been dropped, or the cabinet damaged.

- F. When the video product exhibits a distinct change in performance – this indicates a need for service.

REPLACEMENT PARTS – When replacement parts are required, be sure the service technician has used replacement parts specified by the manufacturer or that have the same characteristics as the original part. Unauthorized substitutions may result in fire, electric shock or other hazards.

IMPORTANT NOTICES

- You can disable the All Power management program (Green PC features) on the BIOS setup in your unit before run the program.
- You cannot use the screen saver program in your unit.

1. INTRODUCTION DVR SYSTEM

This system is PC Architecture HD Digital Video Security System digitizing, compressively saving, retrieving and generating output image information from cameras. Also, this system is Digital Video Security System of Next Generation improving strong points and significantly complementing defects of existing analog CCTV.

1-1. Digital Video Security System features

- Video Capture with variable bitrate or constant bitrate compression and recording directly on to Hard Drive.
- Display Screen: Full screen, 4, 6, 9, 10, 13, 16, 20 split screen.
- **Easy selectable for recording image resolution: 352x240, 704x240 and 704x480**
- **HD camera resolution is auto selected and recording by ratio of 1, 1/4, 1/6 .**
- Pentaplex DVR: Live view, record, playback, backup and remote access
- Color Quality control: brightness, contrast, hue, saturation
- Multiple recording:
 - Mounting maximum 20 cameras, the system can record images onto HDD in the PC GUI VCR style playback control. You can quickly retrieve images in files.
- Easy to set up the DVR system configuration:
 - On screen setup dialog allows you to set functions easily.
 - Examples: the amount of Camera to operate, select camera position onto Screen in the PC.
- Printing images: You can reproduce the selected images as JPG file, which can be printed out with the PC printer.
- Archived Images can be backed up on to DVD+/-RW and USB HDD for long-term storage.
- Image recording directory managing (specify the recording directory on the HDD and check function of the minimum capacity disk storage).
- Sensor/Motion Detector functions:
 - When a sensor signal is received by the system or Motion detection is triggered, the system immediately starts recording images onto the HDD. Sensor recording interval and frame rate control can be adjusted.
- Optimized File System for image saving:
 - File System is to minimize the access time of the Disk and allows the maximum capacity of the Disk to be utilized preventing the occurrence of Disk fragments. Because of optimized file system for image saving was self-developed and applied by the DVR s/w, damaged files can be recovered easily, and increased security is assured.
- Image retrieval:
 - **Recorded images of each camera can be extracted after retrieval of recorded images on multiple cameras.**
 - Partial enlargement of retrieved image is possible and compensation function for image quality allows sharpening and softening images.
 - Images can be printed by a color printer and copied to a Flash drive.
- Supports remote access (Ethernet LAN (TCP/IP) as well as Pan/Tilt, Zoom in/out functions.

1-2. PROVIDED COMPONENTS

DVR system consists of:

- DVR system
- DVR Installation CD contains the following
 - DVR Client software
 - Nero Burning Software
 - User's Manual file (Acrobat PDF type)
- Camera Input BNC connector and accessories
- Keyboard
- Mouse
- Power cord

2. SETTING UP HISCO DVR SYSTEM

2-1. SYSTEM SETTING

Hisco HD DVR surveillance program starts automatically once the system powers up. User is required to **LOGIN** to access HD DVR function



Login

User ID

Password

OK Cancel Keyboard

Fill in the User ID and password (Use keyboard or virtual computer keyboard, by clicking on the keyboard icon).

Default User ID: admin

Default User Password: 1111

In Setup, user can modify the configuration for cameras, network, user privileges and events. Click on SETUP button and user authentication prompt will appear.

System setting window will be displayed. (Shown next page)

NOTE: Only users with administrative privilege can log on to modify any setting.

The screenshot shows the 'System Setup' window with the following configuration options:

- Description:** HD-DVR
- Video Signal Type:** NTSC (selected), PAL
- Watchdog:** ☒ Use Watchdog
- Video Loss:** ☒ Beep, ☐ CMS Notify, ☐ E-mail Notify
- Log Write:** ☒ Motion Log, ☒ Sensor Log
- Display HDD Status:** ☐ Temperature Error, ☐ HDD Error
- ☐ Disable windows function key
- ☐ Set Logoff Time: [] Minute
- ☐ Day light saving time: [Setting...]
- Config data management:**
 - ☒ Backup drive for the last config: []
 - [Config Initialize]
- Backup:** [Schedule Backup Setting ...]
- Setting ...**
 - Reboot / Shutdown
 - Table with columns: Day of Week, Time, Type
 - [Setting ...]

Buttons at the bottom: OK, CANCEL, APPLY

System Setup

Description: Enter the System location name

Video Signal Type: NTSC for North America standard

Watchdog: Enable/disable watch-dog function. Enabling this feature will automatically detect a system's malfunction and restart the system.

Video Loss: Enable/disable notification upon lost of video is detected.

Beep: DVR output continuous beeping sound from speaker

CMS Notify: HD DVR Client receives a notification for video loss

Email Notify: When SMTP is set up, HD DVR send a email notification to user.

Log write: enable/disable writing motion and sensor status into the log file.

Display HDD Status: Warning message pops up when there is some problem with HDD if user checks "Temperature error" or "HDD error".

Disable windows function key: Lock windows for only server use if user want to prevent from other tasks.

Set Logoff Time: HD DVR system logs out when system is idle after a specific time.

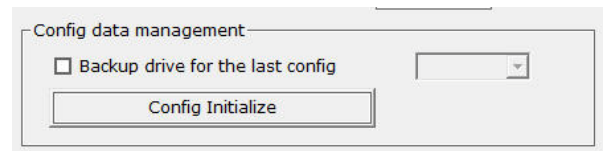
Day Light Saving Time: When time reversal occurs according to summer time, it backs up information as long as time reversal occurs to the folder designated. <Note> User has to change the time.

(It doesn't apply summertime automatically)

Configuration Backup: User can back up the current configuration file to the drive you choose. When starting DVR program, the configuration in a particular drive except C drive would apply.

In case there is a configuration file at other drive than C:

Configuration file at other drive is copied onto C Drive and it applies to DVR operation. In case there is no configuration file at other drive than C: Configuration at C drive applies to DVR operation.



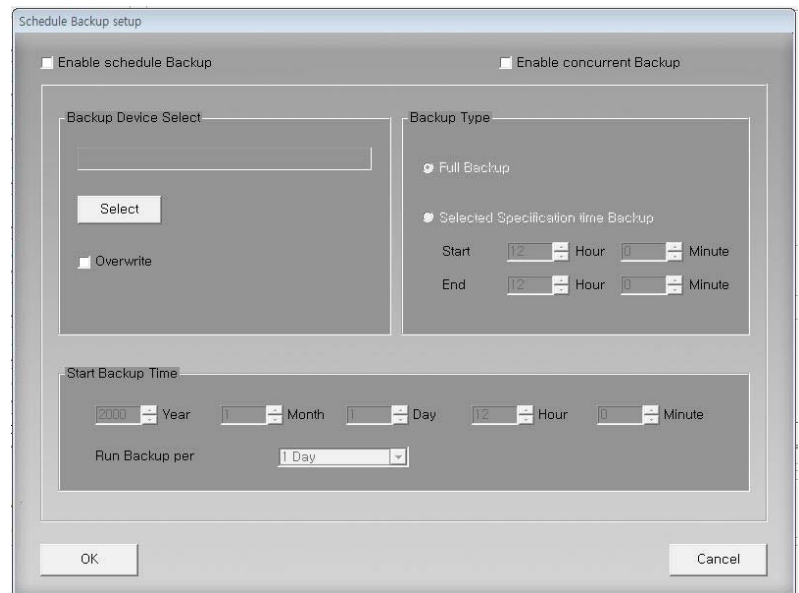
Config Initialize: Initialize setting to the factory default.

Schedule Backup Setting:

Schedule backup: Back up video data for a fixed time in the selected folder at the scheduled time.

Concurrent (Real time) backup: Back up video data in the selected folder in real time.

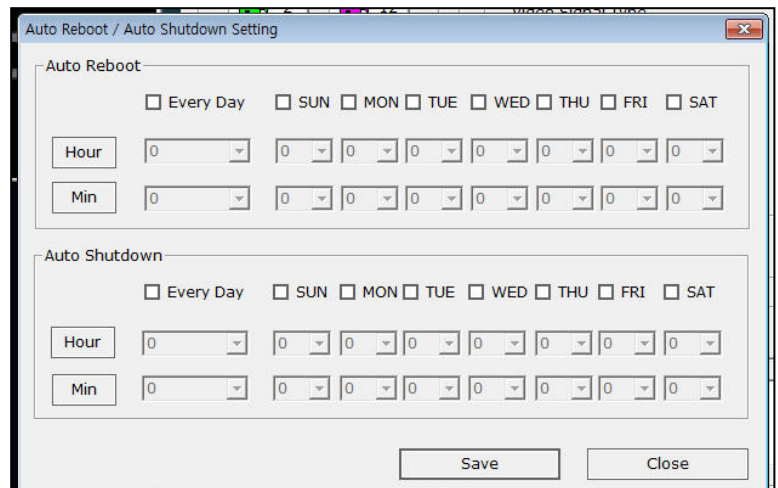
<Note> to play backup data on search, user must disable schedule backup.



Setting:

Auto Reboot: Weekly schedule reboot. **Hisco recommends DVR to be restarted once a week for maintenance.**

Auto Shutdown: System schedule shutdown.



2-2. CAMERA SETTING

Select Camera: Select the camera to configure.

Use Camera: Camera ON/OFF

Camera ID: Name each camera.

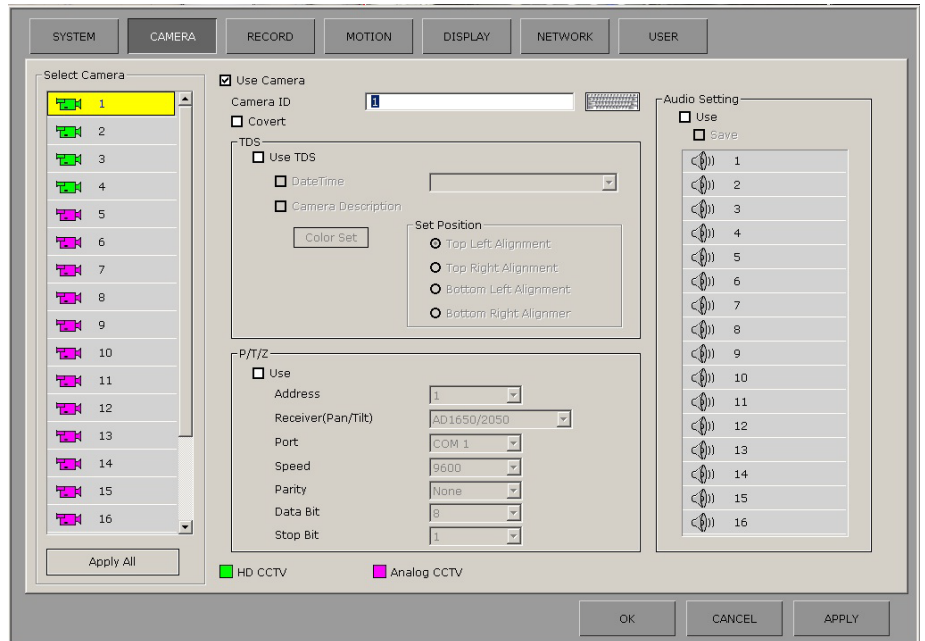
(Max. 17 characters)

Covert: hide camera in live screen and Search mode.

TDS: Display Data Time and Camera Description

PTZ: Enable or disable PTZ control. Clicking “use” allows a user to setup the PTZ camera’s type and Receiver protocol, communication port parameter.

- Select the control type (Panasonic, Pelco etc)
- Specify the Communication Port, Baud Rate/speed, Parity, Data Bit, and Stop Bit to be used
- Select the PTZ Address to be used



Audio Setting:

Select the audio channel for the camera and click apply.

2-3 Record setup

Select Camera: Select the camera for configuration.

Config Setting:

Resolution:

HD camera resolution is automatically selected.

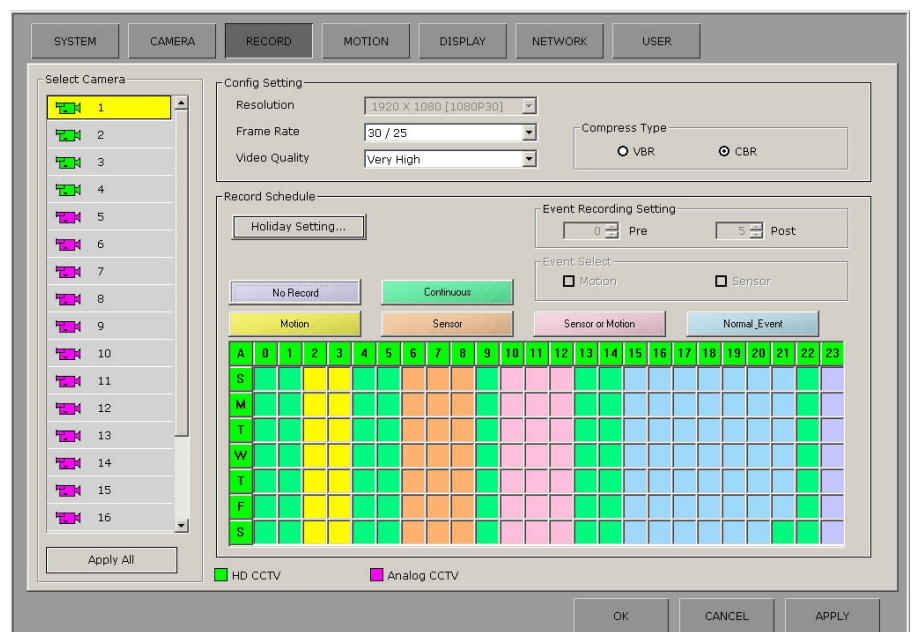
Analogue camera: user needs to specify the resolution for each camera.

Compress Type:

VBR: Variable bitrate result in bigger file

CBR: Constant bitrate smaller file size

Frame rate: Specify recording rate for each camera.



Video Quality: video recording quality

Record Schedule:

Holiday setting: Apply recording configuration of Sunday to user defined date.

Recording schedule for holiday is same as the recording schedule for Sunday.

Holiday Setting...

Event recording setting: specify how many frames are recorded after event is triggered.

Event recording setting

5 Post

	No Record				Continuous				Motion				Sensor				Sensor or Motion				Normal & Event			
	0	1	2	3	4	5	6	7	8	9	10	11	12	13	14	15	16	17	18	19	20	21	22	23
A																								
S																								
M																								
T																								
W																								
T																								
F																								
S																								

Specify the weekly schedule for each camera (hourly)

- **No Record**: live view only on the monitor with no footage being recorded
- **Continuous**: Time lapsed recording
- **Motion**: Recording on motion detection
- **Sensor**: Recording on sensor operation
- **Motion & Sensor**: Recording on sensor and motion detection operation
- **Normal & Event**: recording at 1fps, configured recording frame rate will be activated when event occurs. (Sensor or motion detected)

Note: motion and sensor needs to be checked.

APPLY ALL: to apply current setting to all HD camera or Analog camera.

Note: Click **Apply** to save changes before proceeding to change other setting.

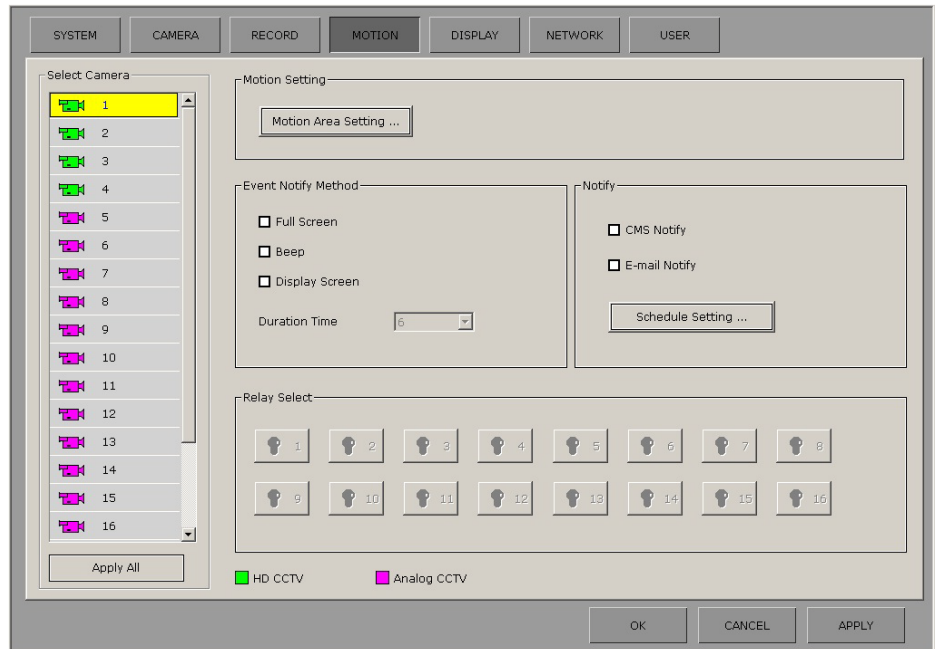
2-4. MOTION DETECTION SETTING

Motion setup

1. Selects camera and customize motion detect area.(See **Motion area setup** P17)
2. Clicks **apply all** to have the same setting for all cameras.

Event Notification

1. Motion event Notification, check **Full Screen**, **Beep** and/or **Display Screen**
To increase or decrease the display time of event camera, change **Duration time**.
2. To receive notification on CMS client software or email, check **CMS notify**.
3. User can assign a relay to each camera. When motion event is triggered, HD DVR will trigger digital output signal.



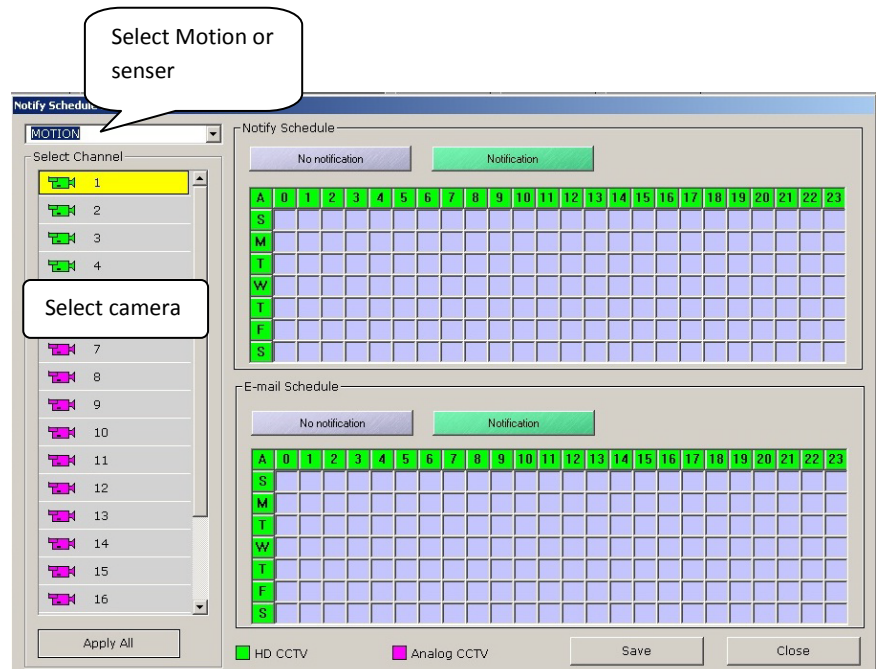
Notification Schedule setup

1. Select Motion or Sensor setting
2. Select Channel to set up trigger notification schedule at remote location.

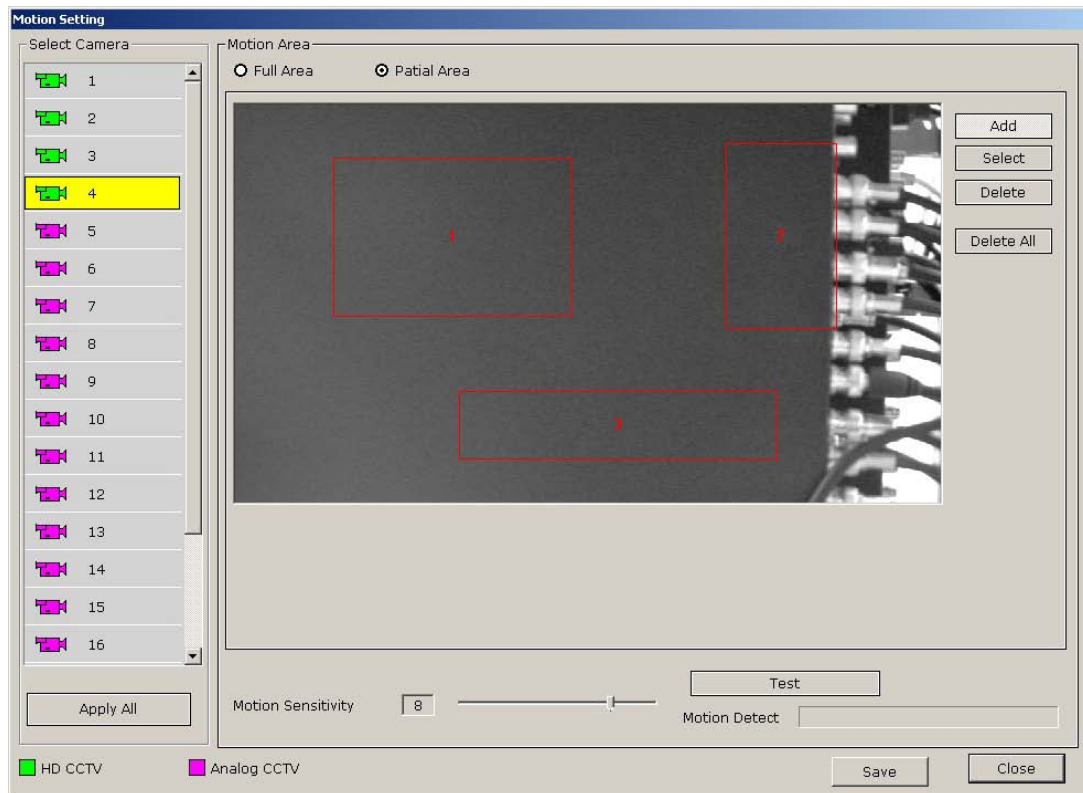
Notify Schedule: specify weekly schedule for each camera

Email schedule: specify weekly schedule for each camera.

3. Click **Save** or **Apply all** to apply changes to all HD or Analog cameras.



Motion area setup



Select Camera: User can set up motion detection areas for individual camera or click apply all to have the same setting for all HD cameras or Analog

Area Setting: Set up motion sensitive area (motion grid).

Full area: auto select and monitor the whole screen for motion.

Partial area: Monitor only Area box specified by user. Max 4 area box.

- Add: Select partial area, left Click and drag to add a motion sensitive area in a camera view. Max.4 individual motion sensitive areas can be drawn.
- Select: select one area and click delete to remove motion sensitive area.
- Delete All: This will delete all detection areas.
- Test: After setting the motion grid and sensitivity, user can test if the setting is detecting motion or not. If a motion is detected, “*detected*” indication will be displayed in the **motion detect** box.

Motion Sensitivity: determines motion by number of pixel changes in a given area. Select the sensitivity of the motion detection area. “1” is least sensitive and “10” is most sensitive.

2-5 Display setup

Display

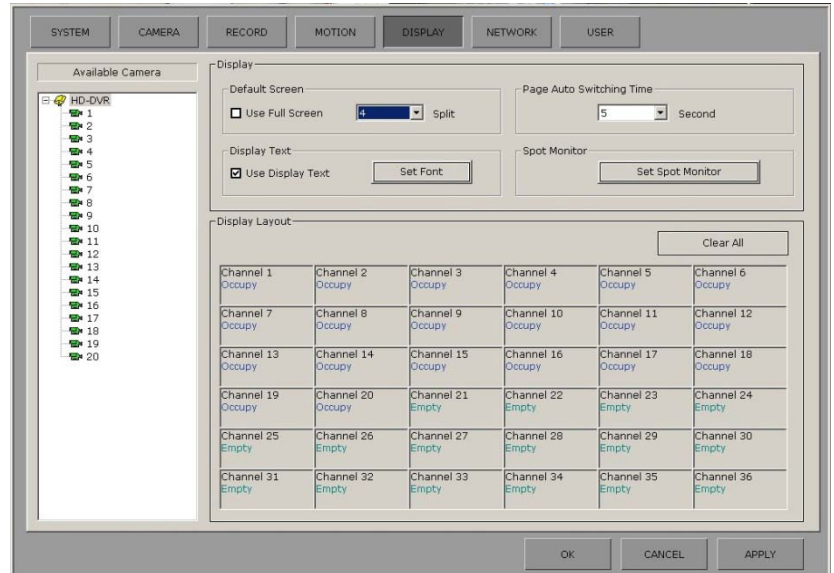
Default Screen: initial start up screen when HD DVR program is running.

Page Auto Switch time: the amount of second passes before HD DVR rotate to next camera

Display Text: Enable/Disable on screen camera status in live view

Spot Monitor: to setup spot monitor for analogue cameras refer to *Spot monitor setup*.

Display Layout: select camera, drag and drop it to desire grid in the table.



Spot monitor setup

Select Spot Channel: 1 or 2

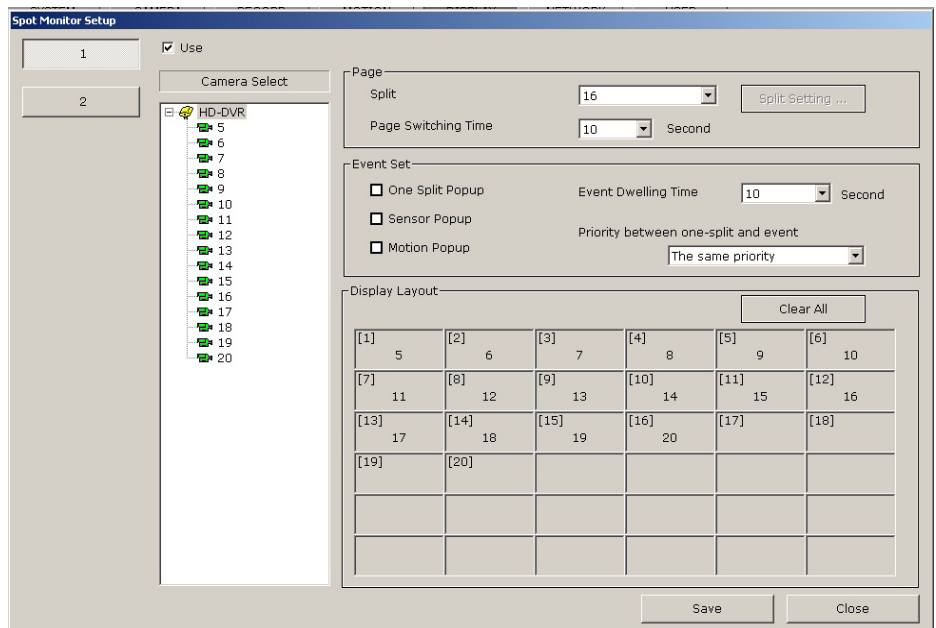
Select camera: Select the camera(s) and drag to Display Layout to be displayed on spot monitor. <Note> Press "Clear All" for the customization.

Split: Select the number of spot monitor display channels (1 to 36) or Mixed split

Page Switching Time: display time of camera image shown on external display when connected.

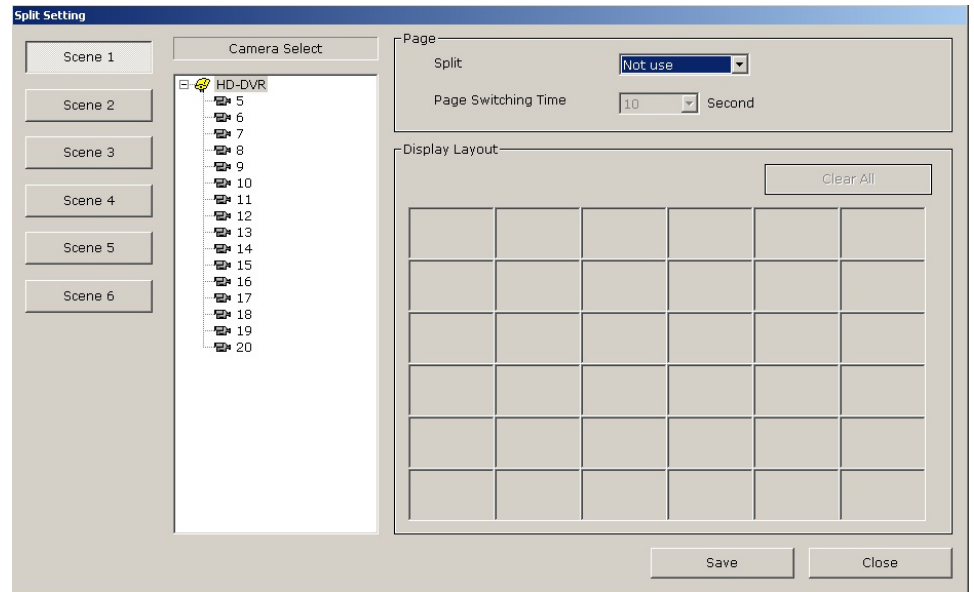
Event Set: Enable/Disable Spot Out monitor to display camera when selected event is triggered.

Event Dwelling time: amount of time spot out monitor stay on triggered camera.



Priority between one-split and event: set up Priority between one-split and event trigger.
Spot monitor will jump to event camera when spot out is set to ***Event has more priority***.

Split Setting: to set up Mixed split.



Note: user can spot out for analogue camera(s) only.

2-6 Network setup

Accept: Enable/Disable CMS and Email notification.

Port Setting: specify which port does HD DVR uses for each function.

Network Notify: Specify which stations receive event notification on CMS.

Email Setting: HD DVR sends Email notification if event is triggered

Recipient:

TO & CC: Recipient's email address

Frequency: the Amount of time between each email is sent out.

Sender:

Default: Hisco recommend user to manually set up SMTP service.

Mail setup: input the correct SMTP information

- **SMTP:** SMTP server address
- **Port:** SMTP server port (default 25)
- **Connection Type:** Select encrypted connection type (Normal, SSL or TLS)
- **From:** Sender's Email address
- **Use authentication:** Select authentication mechanism type
- **User ID:** POP or mail server user ID (if mail server doesn't require user ID, leave blank)
- **Password:** POP or mail server user password (if mail server doesn't require user password, leave blank)

DDNS: Contact DDNS service provider for proper information.

Host name: IP address

User ID: DDNS account

2-7 USER SETTING

User setup

In User setting user can add, modify or delete users for different access privileges.

Add: User can add a new user.

Delete: Choose a user from the list and click **DELETE** button to delete the user.

Modify: Choose user from the list and click **MODIFY** button to change any setting in the **User Setup** menu.

ADD USER

To add a user,

1. Click **ADD** button
2. Type User ID and Password
3. **Comment:** Select what DVR function is available to the user
4. **Connectable Camera:** Click and select cameras available remotely to the user for viewing with client software

3. HD DVR Live View interface



Split Screen



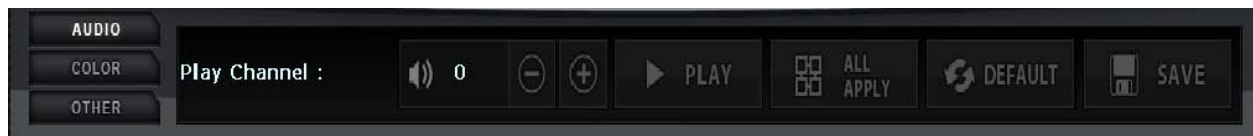
User can switch the Live View mode between X1, X4, X6, X9, X10, X13, or X20 screen split.

To navigate between cameras click Arrows or click A (Auto) for automatic camera rotation.

To monitor Live View in Full screen manner, click **FULL**.

Live Audio

With Audio setup for specific camera, HD DVR user can listen to cameras with audio equipped



To hear live audio, Select a camera channel and click **Audio**. After audio control interface is activated, click Play and Audio input from camera is transmitted.

Colour Adjustment



Colour can be adjusted on each individual camera.

Click a camera to adjust the colour setting.

Click the +/- button to adjust the **Brightness, Contrast, Hue, and Saturation**.

Other HD DVR Function



Other options are listed below:

Info: System information and software version

Back up: manual footage back up

Log View: for reviewing DVR system log

CD Burn: Basic CD/DVD burning Program

Manual Backup

To do a manual back up of multiple cameras, click **BACK UP**.

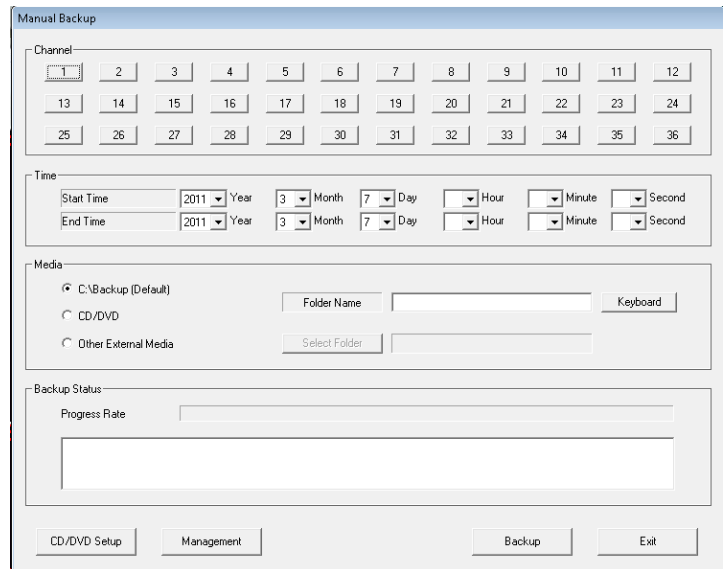
Select one or multiple camera and set time frame. Specify the location where you want to save the file.

Click **Backup** on the bottom of the screen to start the back up process.

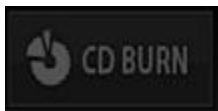
Wait for the backup complete notification.

To Review the saved footage, open the video footage folder. There is a folder named **Backupview**. Inside this folder is a **RecordViewLite** program which is used to view the Video footage.

Note: saved footage is not AVI format.



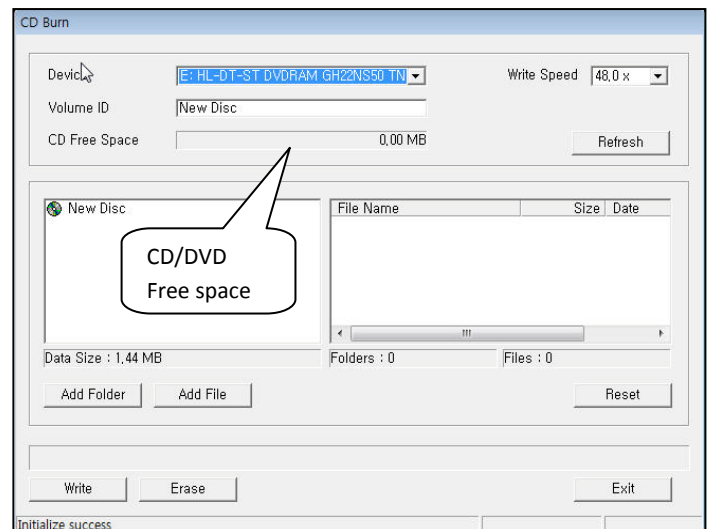
CD/DVD Burning



Hisco HD DVR has build in DVD and CD burning utility. Use **CD burn** to burn multiple JPG, Video footage and AVI file into a CD or DVD

1. Select DVDRAM drive from **Device**
2. Name the DVD/CD at **Volume ID**. This is the name computer will display when play on other computer.
3. Click **Add Folder** to create folders to organize Video Footage on Disk.
4. Click **ADD File** and Select files to be burnt to disk
note: **Data size** cannot be larger than **CD Free Space**
5. Click **Write** to start Disk writing process

Note: If DVD/CD is a rewritable disk, HD DVR can erase content on the disk and overwrite it.

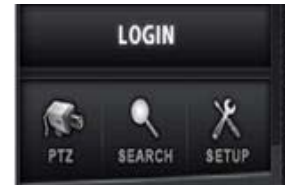


4. HD DVR FOOTAGE REVIEW

4-1 DVR Search

Search is a powerful playback program for HD DVR system. It offers various playbacks and searching option for recorded data.

Click the **Search Button** on the DVR Main Screen



The Search screen appears as below.










SEARCH PROCEDURE

1. Select month and date on the calendar (On the top right corner)
 2. Select hour and minute on the time line bar (on bottom center) of the camera and click the PLAY button
- Note: user can double click to expand time line to minutes.



4-2 Player button

-  -- Continuous play forward
-  -- Continuous reverse play
-  ----- 1 frame forward play
-  ----- 1 frame reverses play
-  ----- Stop
-  ----- Speed increase
-  ----- Speed decrease



Search Function button



- **SINGLE:** Play back single camera
- **MULTI:** Simultaneous playback of multiple cameras: 1, 4, 6, 9, and 16 screen division
- **PANORAMA:** Multiple view of single camera playback
- **Zoom:** On single display, zoom may be used to magnify the image.
- **Full:** Display footage in a full screen manner.
- **GOTO:** Goto the specific time (See 4-6 Bookmark P.29)
- **LIST:** Search on the Bookmark list (See 4-6 Bookmark)
- **ADD:** Add a bookmark (See 4-6 Bookmark)

Panorama Playback

Allows the user to watch single recorded channel frame by frame sequentially on 15-split screen mode. Click "**PANORAMA**" button. The first sec will be viewed on the first division, next second on the second division and etc. The seventeenth second will be viewed on the first division, completing the cycle.

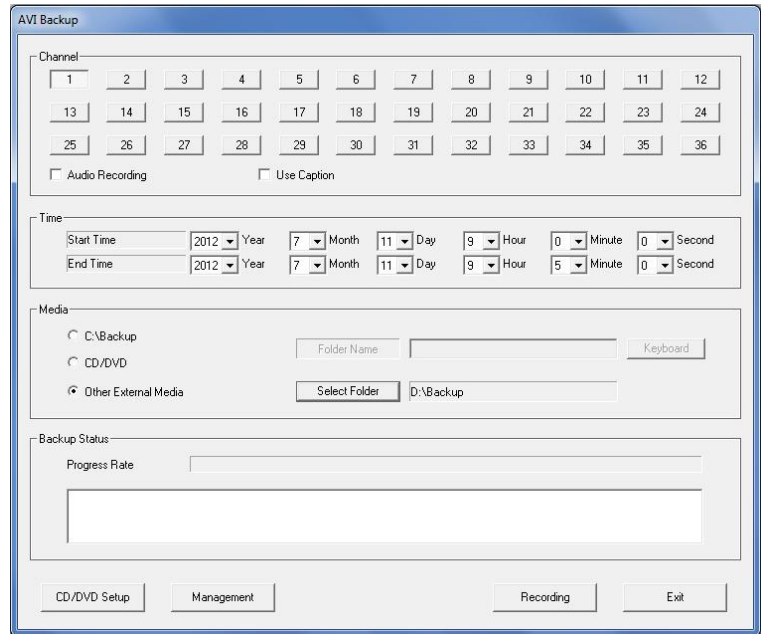
4-3 Save AVI Function

Save function let users save the recorded data as an AVI format file onto CD/DVD or other backup drive.



Save as AVI video file

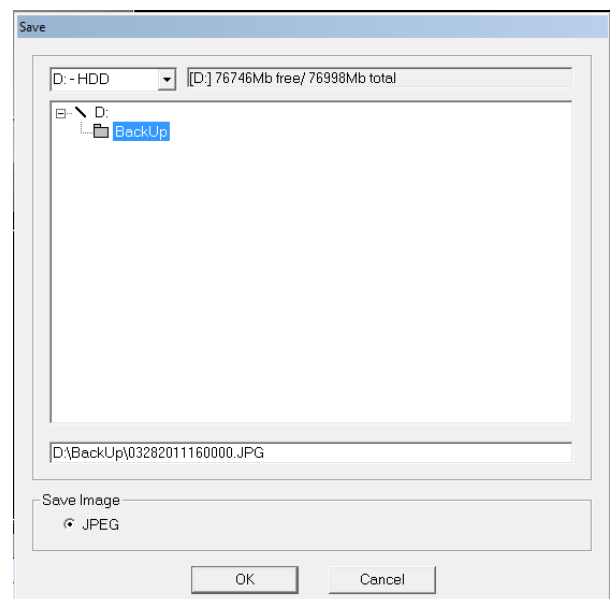
1. Click "**SAVE**" button on the Search main screen and select AVI.
2. Select Cameras and check Audio Recording if audio is enabled for camera.
3. Specify the correct date and time frame
4. Choose **Other External Media** to save footage and create new folder inside Back Up folder (Recommend **D:\Back up**).
5. Click **Recording** to start saving.



Note: User can save footage to CD/DVD or USB flash drive directly

Saving JPEG image

1. Clicking the "**JPEG**" icon will provide the user to save the images in the form of JPG files.
2. Choose the "**D: -HDD**"
3. In the window below choose the "**BACK UP**" folder
4. JPEG image will be name in the format of MonthDateYearTime



4-4 Smart Search

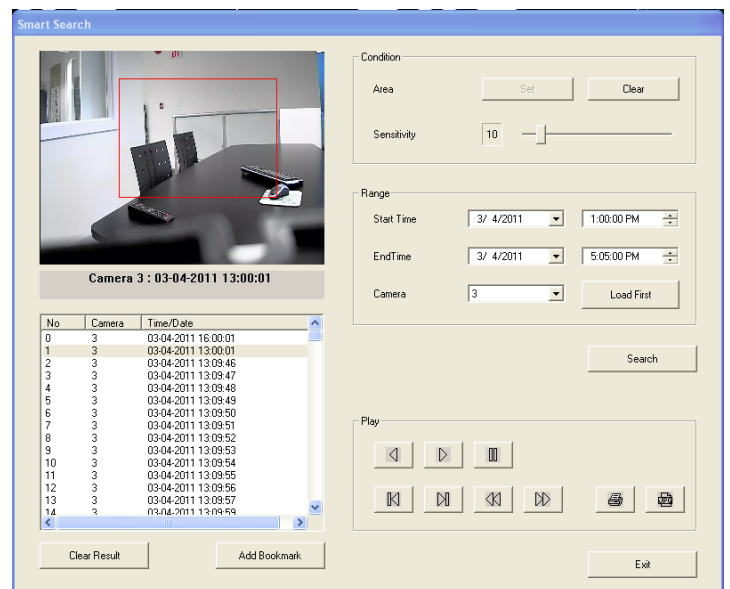
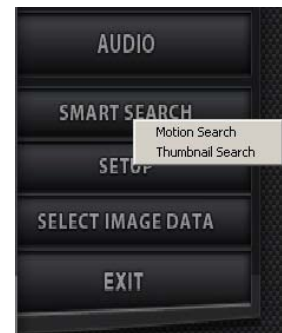
Smart Search allows users to search recorded data with higher efficiency. To access this function click the “**Smart Search**” icon.

Smart Search (Motion Search)

Click **Set** and draw *Motion Detection box* by dragging left mouse button.

Click “**Search**” button and HD DVR will search for pixel changes in the Area box. Event information is listed on the left hand side.

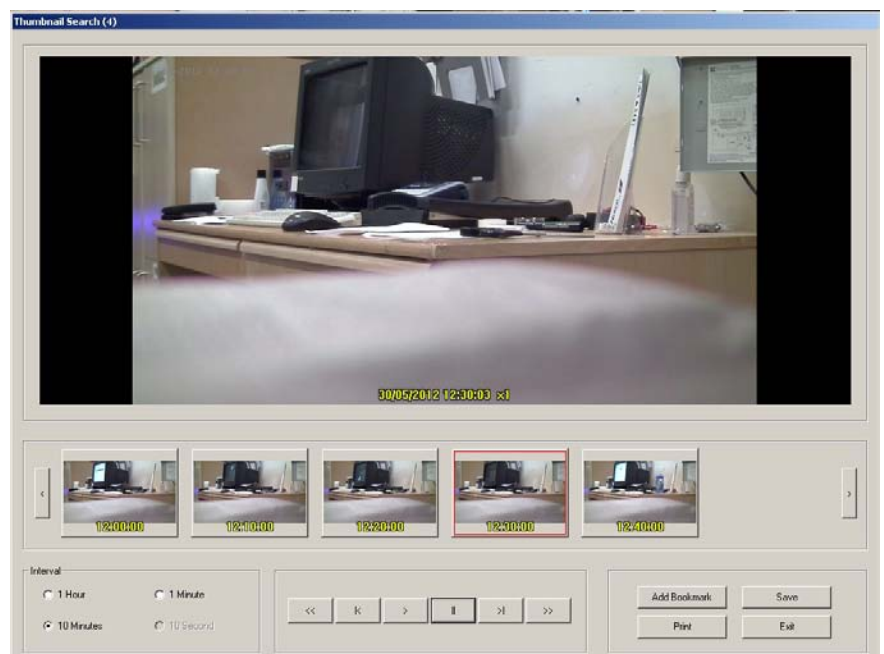
Click **Add Bookmark** to index an event for reviewing later.



Smart Search (Thumbnail Search)

Thumbnail search is a function that helps users to find the videos they are look for more easily by showing every hour, 10 minutes, minute, and 10 seconds stop images.

Note: Select time interval from Hour to 10 seconds at a time.
(Hour > 10 Min > 1 Min > 10 Sec)



4-5 Image Post production

Colour can be adjusted on each still image before saved as JPG picture.

Stop video and Click **COLOR** button to show COLOR ADJUST menu (shown right).

Click and drag left or right to adjust **brightness**, **contrast**, and **saturation**.

HD DVR also has the ability to **Sharpen/Blur** image, convert color to **Grayscale**.

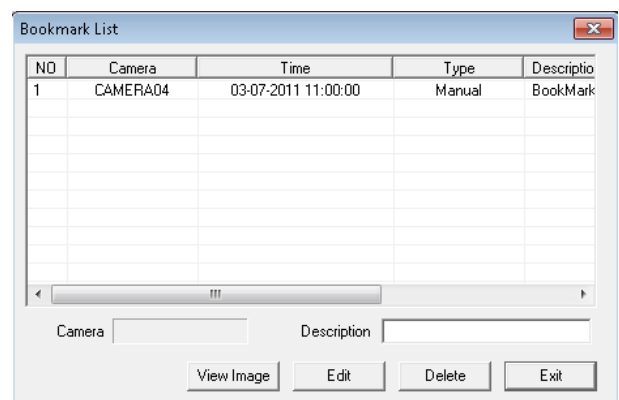
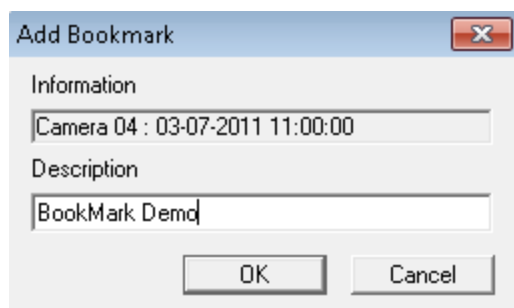
Original: Reverse all changes applied to image.



4-6 Book Mark

Recorded image can be bookmarked using the ADD bookmark function.

Bookmark is a way that specific times and dates can be marked for easy retrieval. To do this, simply click **ADD** and fill in the description. This will add that exact time, date, and camera of current image. At any time you can go back to this point by clicking **List**, and then double click the Date and Time stamp.



GOTO Function



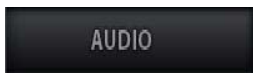
GOTO function enables user to go to specified Date and time using following **GOTO** dialog box.

The **GOTO** feature allows user to go to an exact time and date of a recording. Simply enter the Date, Time, and Camera, and click the OK button.

The 'Select Time' dialog box contains the following fields and controls:

- Channel:** A dropdown menu.
- Time:** A date field showing '3/ 7/2011' and a time field showing '2:34:03 PM'.
- Buttons:** 'OK' and 'Cancel' buttons at the bottom.

4-7 Setting



AUDIO turn ON/OFF

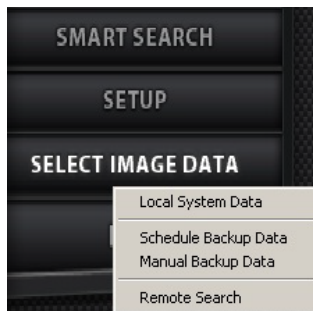


SETUP OSD Position

The 'Setup' dialog box for OSD Position contains the following fields and controls:

- OSD Position:** A section containing two dropdown menus.
 - Channel Description:** Set to 'Up & Left'.
 - Time:** Set to 'Down & Center'.
- Buttons:** 'Save' and 'Cancel' buttons at the bottom.

SELECT IMAGE DATA



Local System Data: Search data at local system(Default).

Schedule Backup Data: Search data from the scheduled backup folder.

Note: Must disable schedule backup. (See P13)

Manual Backup Data: Search data from the manual backup folder (See P24)

Remote Search: Search data from other system.

5. Central Management System (CMS)

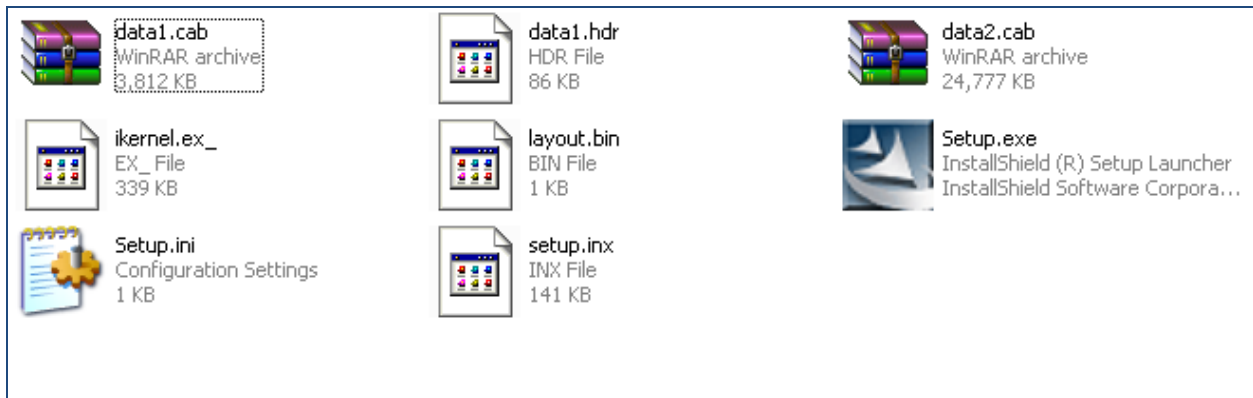
CMS is the remote management program for the HD DVR system, which is installed on a remote site and connected to a network.

Major functions are as below:

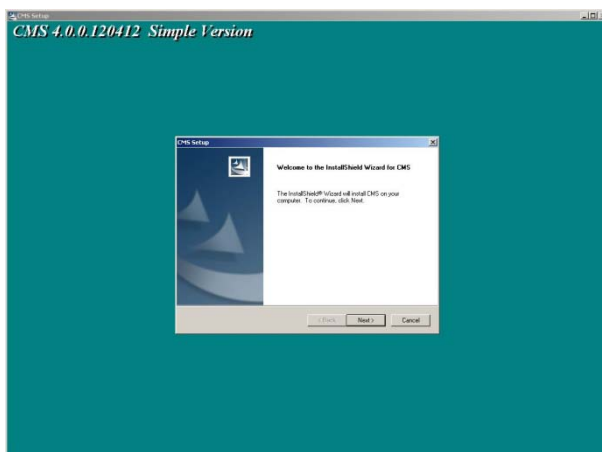
- Remote monitoring function
- Video retrieval and search function
- Saving onto client local computers (remote location) function
- Remote HD DVR system management function (limited)
- Alarm reception function

5-1 CMS Installation

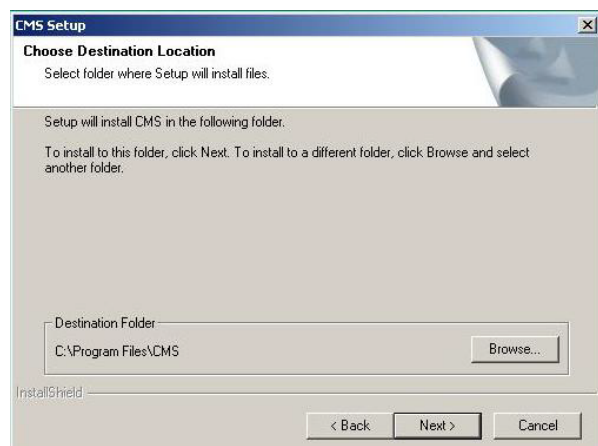
To install CMS client software double click **Setup.exe** in the installation folder.



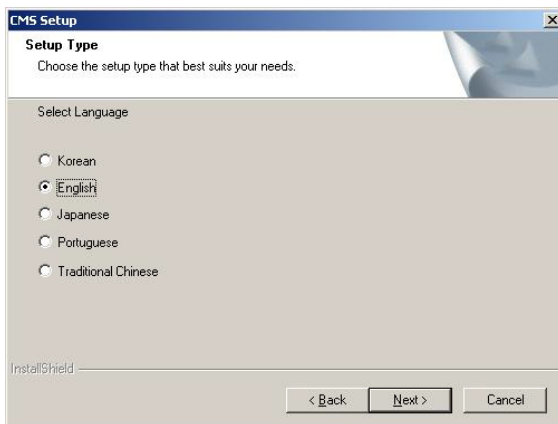
1) Installation program for CMS will launch.
click **next** to proceed



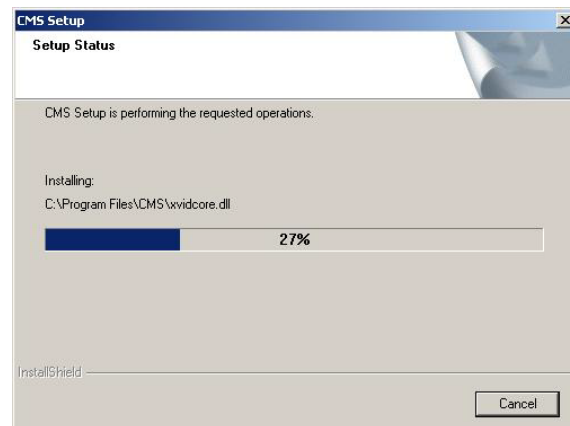
2) Install CMS in default directory and click **next**



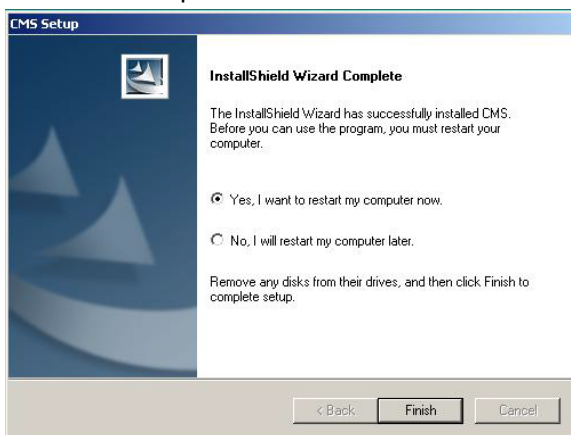
- 3) Choose **English** as the language for CMS interface.



- 4) CMS installation will start and automatically proceed to next step.



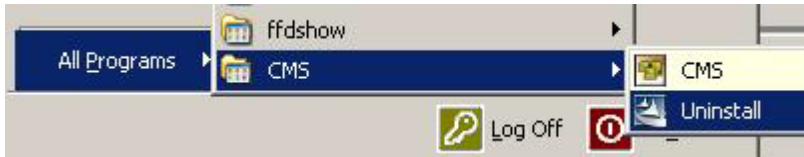
- 5) When installation is complete, click Finish to restart computer



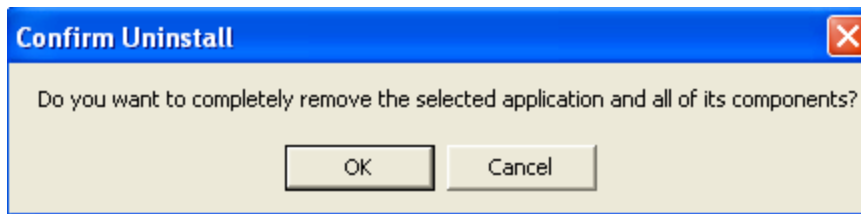
CMS client Uninstall

To uninstall CMS Client, click **Uninstall** and **OK** to confirm.

1.)

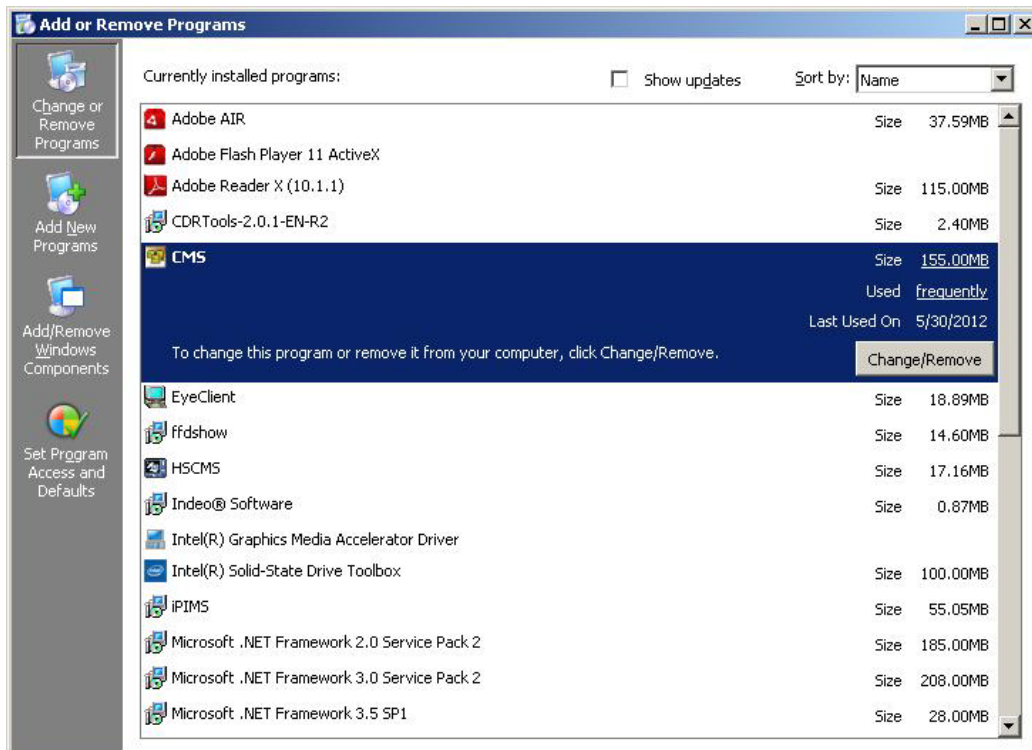


2.)



To Uninstall CMS via Control Panel,

1.) Click Start menu/Control Panel and double click **Add or Remove Programs**



2.) Click **Change/Remove** and **Ok** to confirm Uninstall.

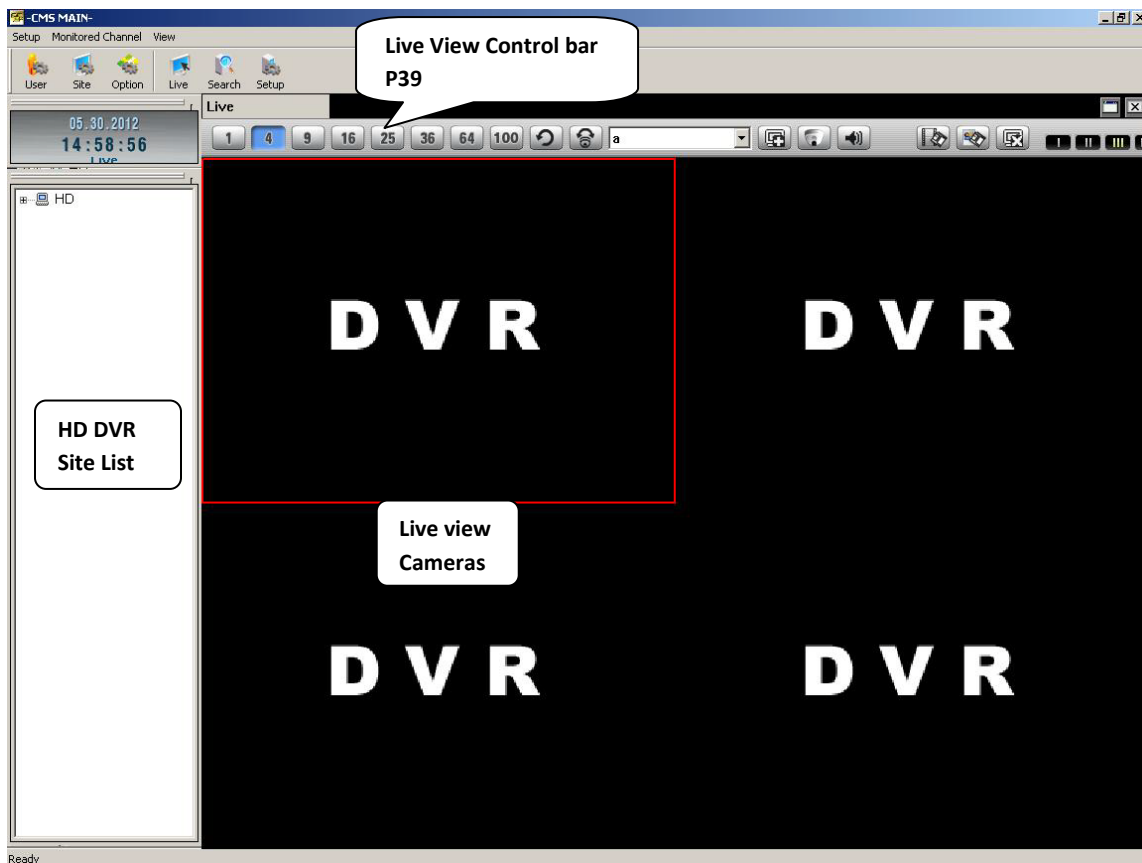
5-2 CMS Main



Click on the 'CMS' icon on the client computer. Client login screen will appear

Default **ID/password** is admin/1111

Note: **ID/Password** is case sensitive



5-3 Client Program setting

Local user account

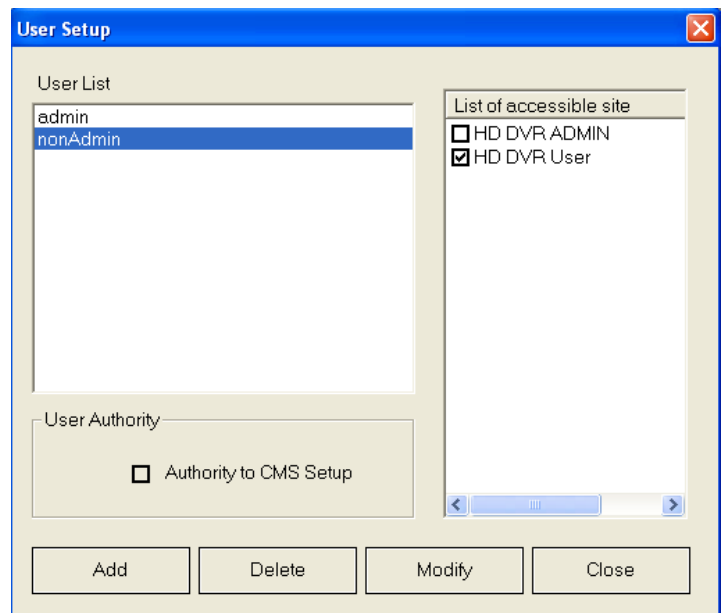


THIS COMES FIRST

CMS allow user to connect to multiple HD DVR system with one log in ID/password.

Each **HD DVR site** has different account and password; so HD DVR server can control which content is accessible by user.

Only **admin** account has privilege to modify site accessible for each user.

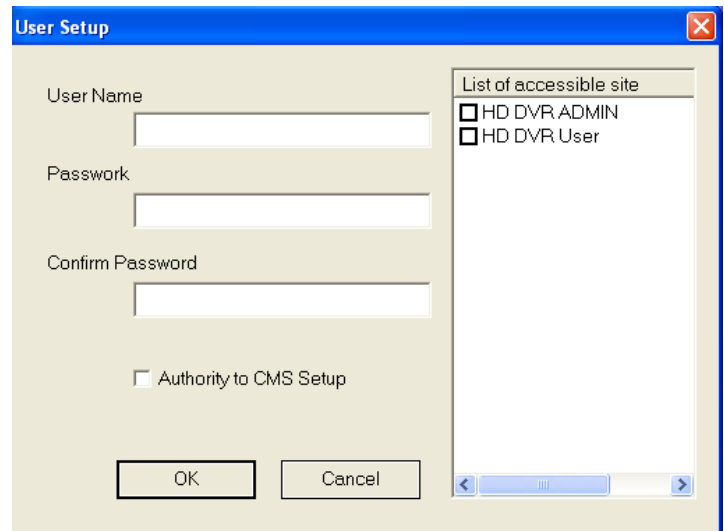


To add user account, log in as **admin** and click **Add** in user Setup.

User name: log-in ID

Password: log-in password at CMS start up.

Authority to CMS setup: allow specified user to change local setting except user set-up



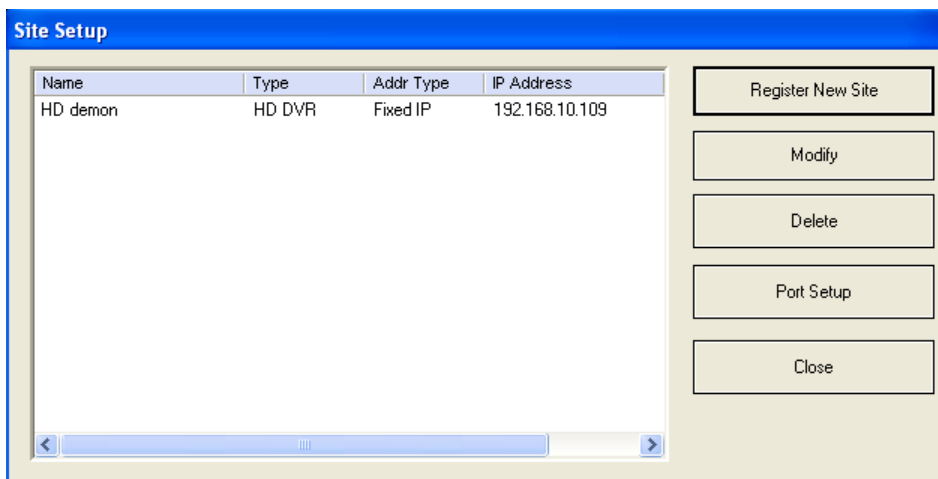
The 'User Setup' dialog box contains the following fields and options:

- User Name: [Text Input Field]
- Password: [Text Input Field]
- Confirm Password: [Text Input Field]
- ☐ Authority to CMS Setup
- List of accessible site:
 - ☐ HD DVR ADMIN
 - ☐ HD DVR User
- Buttons: OK, Cancel

Register New Site,



Click on the "Setup" button, the client setting dialog will appear as shown below.



The 'Site Setup' dialog box features a table with the following data:

Name	Type	Addr Type	IP Address
HD demon	HD DVR	Fixed IP	192.168.10.109

On the right side of the dialog, there are five buttons: Register New Site, Modify, Delete, Port Setup, and Close.

Site Setup

PC-DVR Site (Manual Input)

PC-DVR Site (DIMS)

StandAlone Site

Name: HD DVR

IP or URL: 192.168.xx.xx

Video Port Number: 6807

ID: admin

Password: ****

Registration

Close

Register to Others

Name: Remote HD DVR ID.

IP or URL: local or public IP address of the HD DVR.

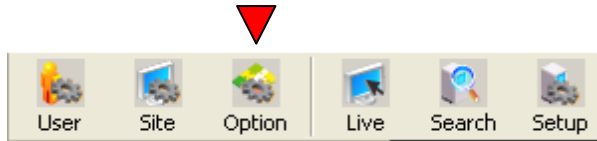
Note: Port forwarding is required for use of public IP address.

Video Port number: default video port is **6807**

ID & Password: username and password on HD DVR server with remote access privilege

After inputting information for remote HD DVR server, click **Registration** to add remote HD DVR. This information can be edited or deleted using the **Modify** or **Delete** button.

CMS local Setting



Login: set up automatic login when starting CMS

Display: if client program is connected to remote HD DVR and no picture for LiveView; disable Overlay use and restart CMS program.

Channel Split: initial Camera display Mode of the CMS

Text Setup: customizing the text for On-Screen-Display

Save Directory Setup: Specify default directory for saving files from remote HD DVR.

Reconnection: if DVR server disconnected, CMS client software will attempt to establish the connection again according to user setting.

Option Setup

Login

☐ Automatic Login ID:

Display

☒ Use overlay ☐ Not use overlay

Channel Split

☐ 1 ☒ 4 ☐ 9 ☐ 16 ☐ 36 ☐ 64 ☐ 100

Auto-Change

Second

Text Setup

☒ Text Shown in Channel

Font:

Color:

Text Size

1 Split: 64 Split:

4 Split: 100 Split:

9 Split:

16 Split:

36 Split:

Save Directory Setup

Reconnection

☐ Use

Count: Term: Min

DB Management

DB Compress Time: H M

Event Keep Period: Week(s)

Version: 3.0.0.0

5-4 Live view Feature

Live view Tool Bar



Split screen: 1, 4, 9, 16, 25, 36 User can have up to 36 cameras display live on the screen.	
Display rotation Manually change display camera to next.	
Auto camera rotation Automatically cycle through camera on live view	
Pan/Tilt/Zoom camera PTZ control panel is functional when HD DVR has it enabled in Setup	
Two way audio: CMS user can communicate with HD DVR operator if both side has audio set up	
Save .AVI Save current selected camera in AVI format. To end video footage clip, click button again.	
Snapshot Save current screen as a image. Click save to confirm.	
Disconnect All Disconnect all HD DVR server video streaming.	
Live view Quality	
highest resolution gives the best video quality but require more system resources	
Lowest resolution uses the least system resource as it gives the lowest viewing quality	

5-5 Remote Search



Click "search" button on the Client Screen.

CMS search offer the same interface as it is on the HD DVR Server (Page 25).

Note: following function listed below are not available on CMS client software.

Bookmark

Select Image Data



5-6 Remote HD DVR server Setup

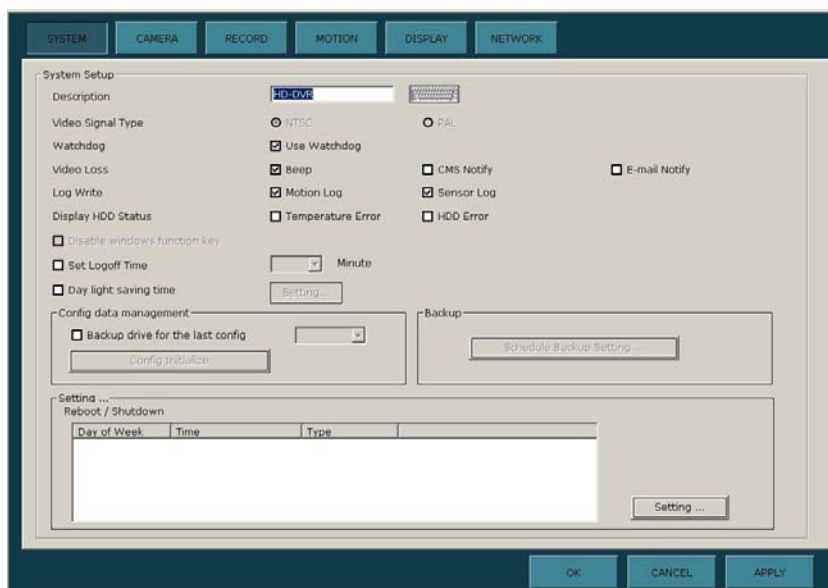


Once connected to remote HD DVR, if you have proper privilege you can manage HD DVR server remotely.

After logged into CMS client software, select HD DVR **Site** and **Setup**.

Remote Setup offer the same interface as it is on HD Server (page 12)

Note: option that can't be changed remotely are grey out; ie/ motion area setting and user set-up.



5-7 Camera Group

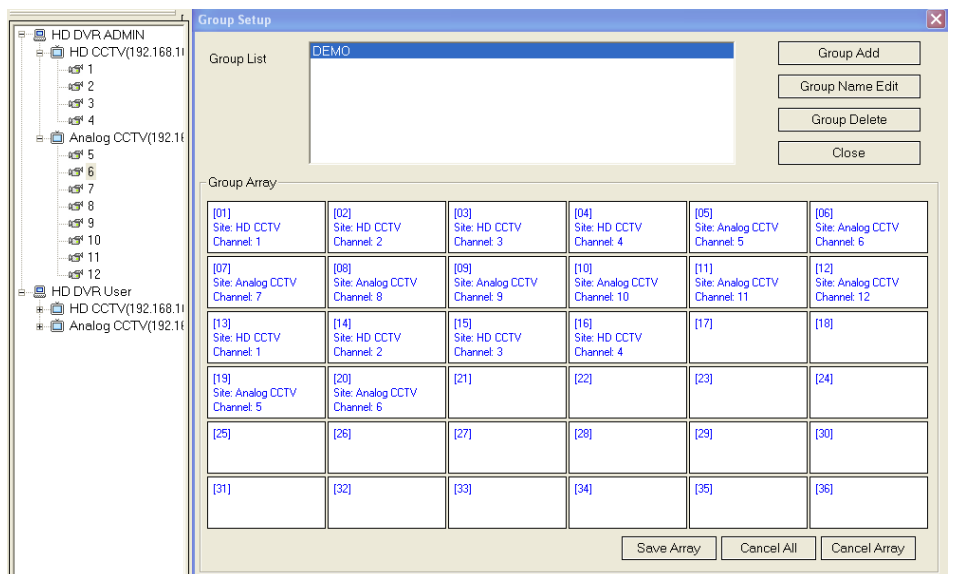
User can save cameras array from multiple HD DVR system as a **group**.

Group setup

Click on setup in the menu bar at the top, and select **Group Setup**.



The **Group Setup** window is shown below.



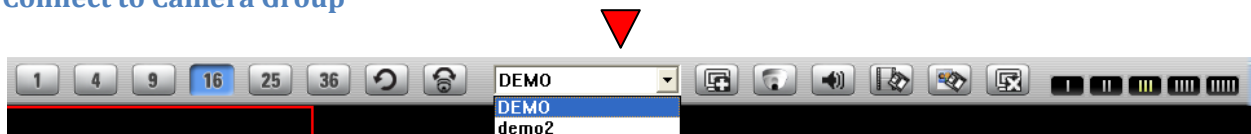
Click **Group Add** to create new camera group.

To modify or delete group, select group name and click "**Group Name Edit**" or "**Group Delete**"

Drag and drop camera from different HD DVR in the **Group Array** from the **Site** list of the CMS main screen.

Click **Save Array** to keep the changes and then click **close** to exit out of Group setup.

Connect to Camera Group



Click on the Camera group shortcut to display the list of Groups name from the drop down menu.

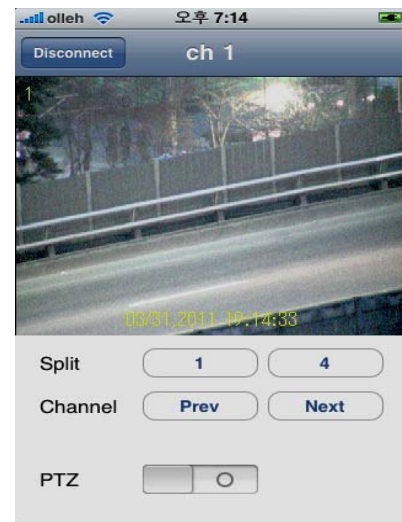
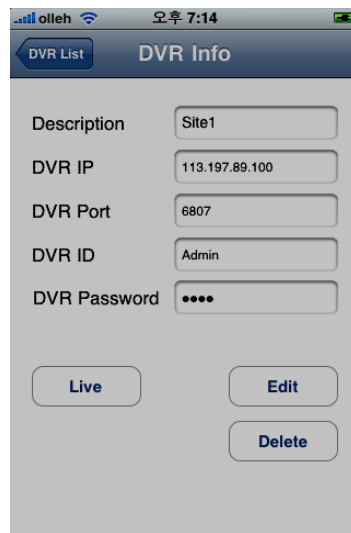
Select the proper camera group and click yes to confirmation for connection.

6. iPhone/SmartPhone (Smartview)



1. Access to the App store and search
2. Search and Install "Smartview"
3. Add and Save New DVR info
4. Access DVR

iPhone



SmartPhone(Android)

